

ALLSHENG

GeneCE Series

Biofragment Analysis System



GeneCE Series

Biofragment Analysis System

GeneCE series biofragment analysis systems include four products: GeneCE-100, GeneCE-200, GeneCE-300 and GeneCE-300B. Designed for quantitative and qualitative analysis of DNA and RNA samples, the automated electrophoresis system can run 1-104 samples simultaneously. The operation of instrument are simple, no manual gel preparation required, and can achieve fully automatic sample detection.

Widely used in experiments such as gDNA quality control, NGS library quality control, cfDNA quality control, conventional PCR product detection, total RNA and fragmented RNA sample quality control.



GeneCE-100	GeneCE-200	GeneCE-300	GeneCE-300B
Basic research edition, suitable for fast cartridges	For automation system	Basic research edition, unsuitable for fast cartridges	Medical device edition, unsuitable for fast cartridges

Features

Convenient Operation

Equipped with a 10-inch rotatable touch screen as standard, which can switch between horizontal and vertical screens according to analysis needs.

High Sensitivity

Nucleic acids can be detected at concentrations as low as 0.2pg/μL.

High Resolution

For DNA fragments within 500bp, the resolution can reach 1-4bp, and for fragments within 200bp, the resolution can reach 1bp.

Cartridge Life Counting

The RFID chip embedded in the cartridge can auto-record the number of tests and the expiration date, and give a prompt.

Cartridge Precast Gel

No need for manual glue preparation and filling, just plug and play, Each cartridge can analyze 240 samples.

Parallel Analysis

A single test throughput of 1-104 samples can be achieved.

Reliable Results

Provides sample concentration, fragment length, 28S/18S, genomic DNA integrity DII value, RNA integrity RII value and DV200, etc.

Various Specifications

Including DNA-related high-sensitivity, high-resolution, large-fragment and standard kits, RNA-related high-sensitivity and standard kits.

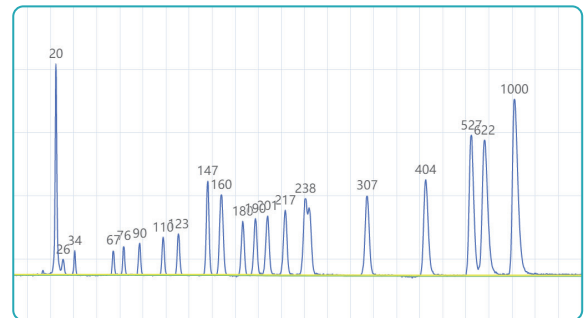
Protocol



Place samples
in the instrument



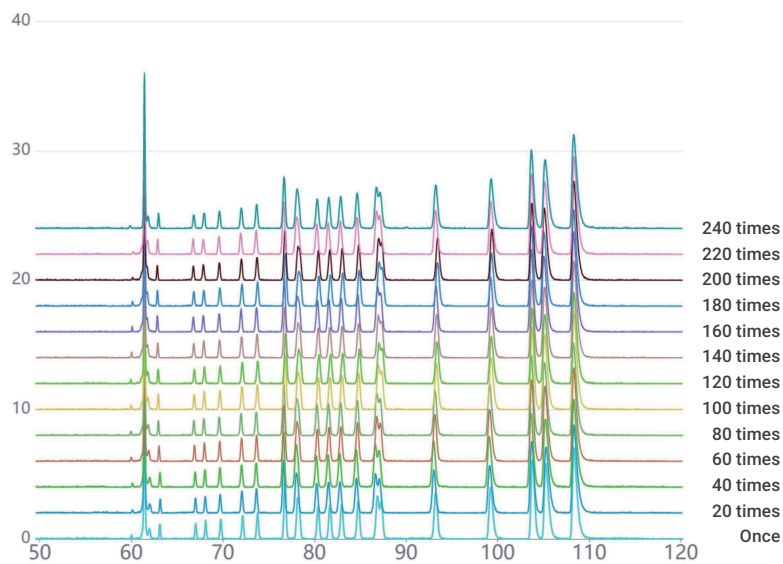
Graphical
result output



Excellent Performance

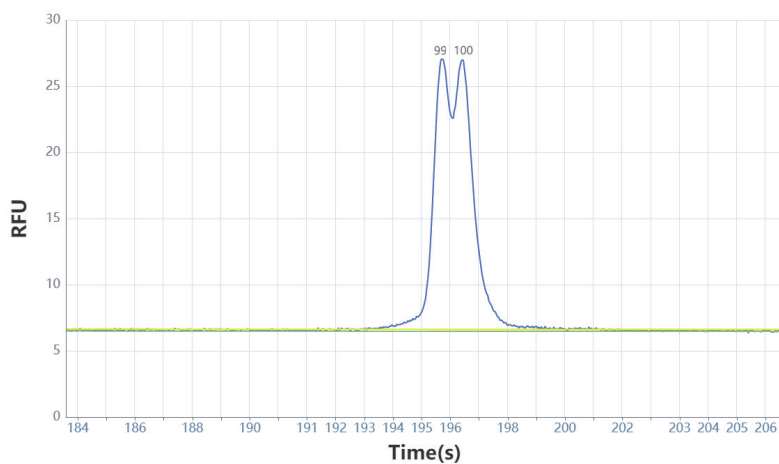
01 High Repeatability

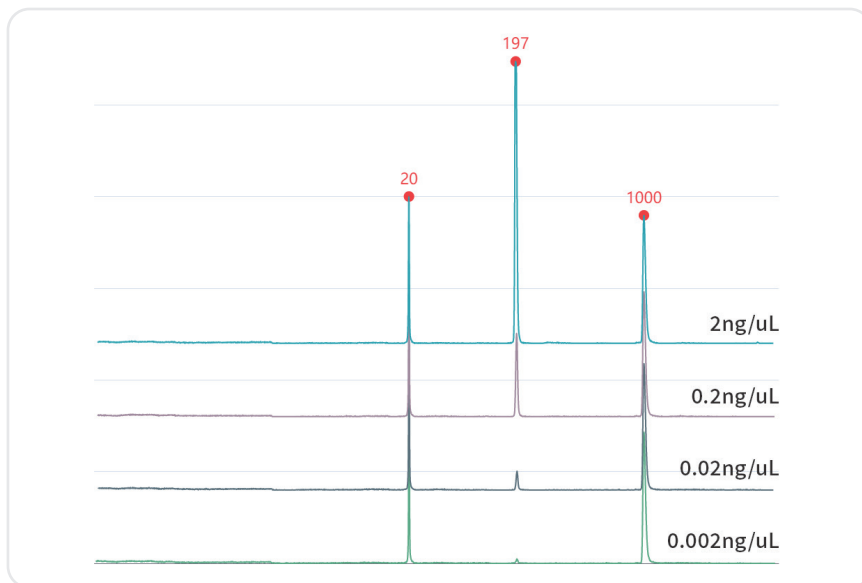
Repeat the test of the marker sample 240 times, and the marker band can still maintain excellent fragment accuracy.



02 High Resolution

DNA samples with differences as low as 1bp can be distinguished.



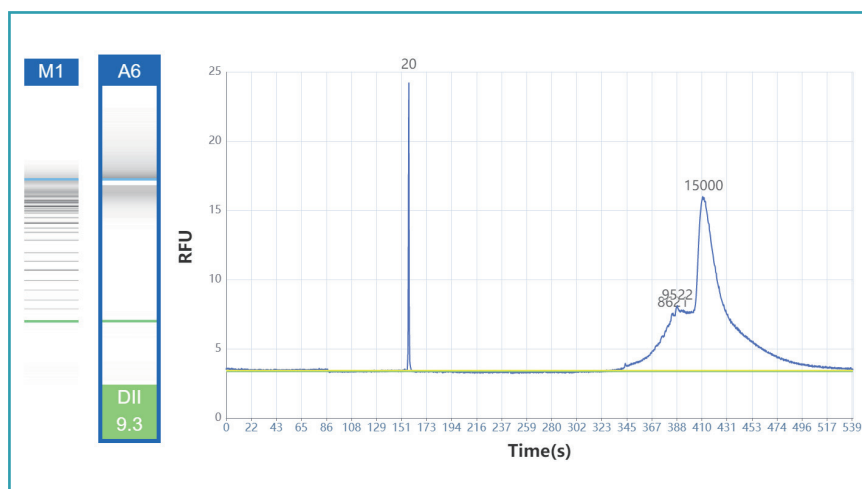


03 High Sensitivity

The detection range from nanogram to picogram is available.

Features of Software

GeneCE provides excellent software, which can be used to perform operations such as well layout, parameter setting and data analysis through a 10-inch high-resolution touch screen. The interface is intuitive and easy to understand, the operation is simple and convenient, and the sample analysis progress can be completed efficiently.



The figure displays the software interface for process file settings. It includes sections for Process File (Name: 10312024_11235, Created: 10/31/2024 11:24:08), Cartridge (Cartridge Type, Remaining Runs, Expiration Date), and Buffer (Separation Number: 40/100, Change Time: 10/10/2024 18:19:38). Below these are tabs for 'test 1' and a sample layout grid with columns 1-12 and rows A-H. The grid shows blue circles indicating sample positions. At the bottom, there are fields for Test Method, Sample duration(s) (10), Separation duration(s) (150), and a 'Run' button.

- The software supports user authority classification, clear authority, and independent account passwords.
- Supports comparison of gel images and peak images of different samples in a single project or multiple projects.
- The unique algorithm can directly reflect the characteristics of the peak, including the number, height, width and area of each peak.

Fragment Analysis Kit

A variety of fragment analysis kits are suitable for the GeneCE series biofragment analysis system, mainly used for the detection of fragment size and concentration of samples such as gDNA, cfDNA, FFPE samples, PCR products, fragmentation libraries, mRNA and fragmented RNA. Compared with traditional electrophoresis, it has the advantages of high resolution, fast separation speed, low sample consumption, high detection sensitivity and fully automated.



Kit	Separation Range	Maximum Resolution	Number of Cartridge	LOD	Shelf Life	Application
High resolution (DNA) cartridge kit (SH1)	20-5000bp	1-4bp	240 times	1pg/μL	6 months	Multiplex PCR detection, SSR analysis
Standard (DNA) cartridge kit (SC2)	20-5000bp	4-10bp	240 times	1pg/μL	6 months	NGS library quality control, cfDNA detection, conventional PCR detection
High sensitivity (DNA) cartridge kit (NH1)	20-5000bp	4-10bp	100 times	0.2pg/μL	4 months (Open 3 months)	Analysis of low-concentration DNA samples, such as cfDNA
(RNA) fragment cartridge kit (RC1)	20-6000nt	/	100 times	5ng/μL	4 months	Total RNA quality control mRNA quality control CRISPR quality control
High sensitivity (RNA) fragment cartridge kit (NRH1)	20-6000nt	/	100 times	1ng/μL	4 months	Low-concentration RNA analysis
Large fragment (DNA) cartridge kit (LS1)	20-23000bp	4-10bp	240 times	20pg/μL	6 months	Genome, third-generation sequencing library
Fast cartridge kit (FF3)	20-5000bp	>50bp	300 times	0.1ng/μL	4 months	Rapid analysis of PCR products

Parameter

Detection mode	Fluorescent	Number of samples/test	1-104
Light source	LED	LOD	0.2pg/μL (optimization conditions)
Display	10 inch high resolution touch screen	Resolution	1-4bp
Power	110-240V/AC, 50/60Hz	Analysis time	3-5 min/sample
Weight	26kg	Sample consumption	<0.2μL
Dimension	460×445×448mm	Fragment size CV%	≤2%
Chanel	Single channel	Fragment concentration CV%	≤4%
System	Windows 11 and above		

Ordering Information

Code	Product Description	Function
AS-31010-00	GeneCE-100	Basic research edition, suitable for fast cartridges
AS-31020-00	GeneCE-200	For automation system
AS-31030-00	GeneCE-300	Basic research edition, unsuitable for fast cartridges
AS-31040-00	GeneCE-300B	Medical device edition, unsuitable for fast cartridges

Code	Product Description	Function	Specification
AS-31011-01	High-resolution DNA fragment analysis kit	SH1	240 times/kit
AS-31011-02	Standard DNA fragment analysis kit	SC2	240 times/kit
AS-31011-03	High-sensitivity DNA fragment analysis kit	NH1	100 times/kit
AS-31011-04	RNA fragment analysis kit	RC1	100 times/kit
AS-31011-05	High-sensitivity RNA fragment analysis kit	NRH1	100 times/kit
AS-31011-06	Large DNA fragment analysis kit	LS1	240 times/kit
AS-31011-07	Fast cartridge kit	FF3	300 times/kit

Code	Product Description	Specification
AS-31011-97	8-strips + caps	2 strips
AS-31011-98	0.5 mL straw	2
AS-31011-99	Liquid reservoir	2
RS-SB01	Separation buffer (DNA)	60mL/bottle
RS-SB02	Separation buffer (RNA)	60mL/bottle
RS-DB01	Dilution buffer (DNA)	15mL/bottle
RS-DB02	Dilution buffer (RNA)	15mL/bottle
RS-MO01	Mineral oil	15mL/bottle

Code	Product Description	Specification
RS-AM0101	20-1000bp Alignment Marker (DNA)	100μL/kit
RS-AM0102	20-5000bp Alignment Marker (DNA)	100μL/kit
RS-AM0103	20-15000bp Alignment Marker (DNA)	100μL/kit
RS-AM0201	Low Marker (RNA)	100μL/kit
RS-SM0101	20-1000bp Size Marker (DNA)	100μL/kit
RS-SM0102	20-5000bp Size Marker (DNA)	100μL/kit
RS-SM0103	20-15000bp Size Marker (DNA)	100μL/kit
RS-SM0104	23Kb Size Marker (DNA)	100μL/kit
RS-SM0201	RNA 6000nt Size Marker	100μL/kit

HANGZHOU ALLSHENG INSTRUMENTS CO., LTD.

Building 9 No.7 of Zhuantang Science and Technology Economic Zone,
Xihu District, Hangzhou City, 310024 Zhejiang, P.R. China

Tel: +86-571-88859758

Fax: +86-571-87205673

✉ info@allsheng.com

🌐 www.allsheng.com

