

ALLSHENG

GeneCE-Mini

Biofragment Analysis System



GeneCE-Mini

Biofragment Analysis System

GeneCE-Mini portable biofragment analysis system can run 1-16 samples simultaneously. It is small in size, light in weight, and easy to carry. It is suitable for molecular biology experiments, teaching laboratories, small clinics (with rapid detection reagents), rapid detection centers, etc.

GeneCE-Mini: Standard 10-inch tablet

GeneCE-MiniA: No touch screen, direct connection to PC



Features

Small Size

Occupies a small area, light in weight, easy to move and carry.

High Sensitivity

Nucleic acids can be detected at concentrations as low as 0.2 pg/ μ L.

High Resolution

For DNA fragments within 500 bp, the resolution can reach 1-4 bp, and for fragments within 200 bp, the resolution can reach 1 bp.

Cartridge Life Counting

The RFID chip embedded in the cartridge can auto-record the number of tests and the expiration date, and give a prompt.

Flexible Loading

A single test throughput of 1-16 samples can be achieved.

Reliable Results

Provides sample concentration, fragment length, 28S/18S, genomic DNA integrity DII value, RNA integrity RII value and DV200, etc.

Cartridge Precast Gel

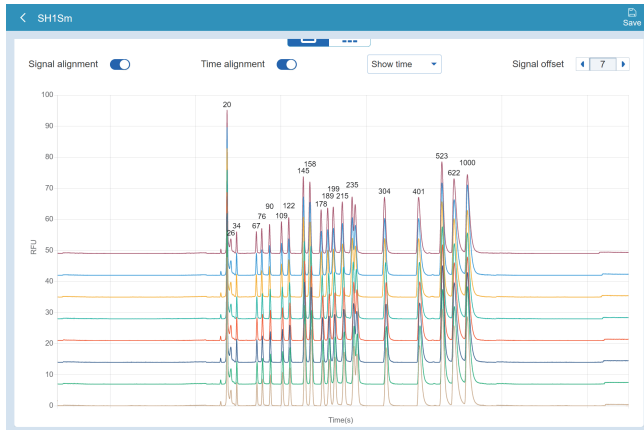
No need for manual gel preparation or gel filling, just plug and run, the instrument automatically loads samples, and each cartridge can analyze 240 samples.

Diversified Operations

Conveniently control the instrument via tablet software;
Also adapt to traditional operating habits and use PC software for computer control and data analysis.

Excellent Performance

High Repeatability



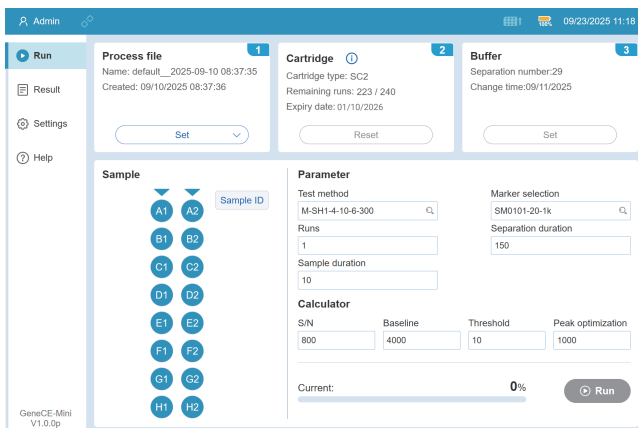
Repeat the test of the marker sample, and the marker band can still maintain excellent fragment accuracy.

High Sensitivity

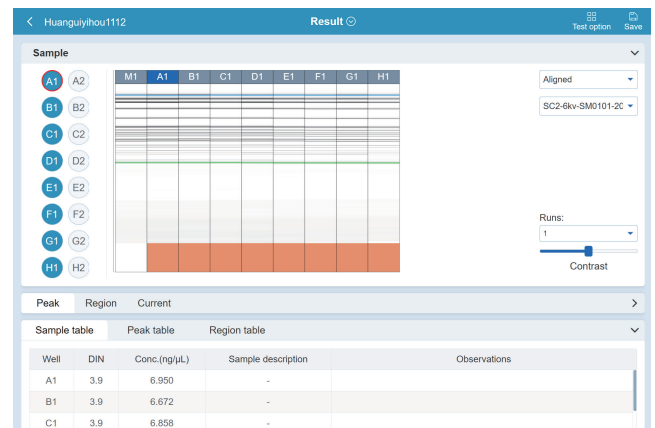


The LOD of cartridge can reach up to 2 pg level.

Features of Software



GeneCE-Mini provides easy-to-use standalone control software, allowing you to complete parameter settings and data analysis using a 10-inch high-resolution tablet. The user interface is intuitive and easy to understand, and the data results are clear and concise.



- The software supports the simultaneous display of gel images, peak images and fragment sizes.
- Supports comparison of gel images and peak images of different samples in a single project or multiple projects.
- Data can be transferred via USB flash drive and E-mail.

Fragment Analysis Kit

A variety of fragment analysis kits are suitable for the GeneCE-Mini biofragment analysis system, mainly used for the detection of fragment size and concentration of samples such as gDNA, cfDNA, FFPE samples, PCR products, fragmentation libraries, mRNA and fragmented RNA. Compared with traditional electrophoresis, it has the advantages of high resolution, fast separation speed, low sample consumption, high detection sensitivity and fully automated.



Kit	Separation Range	Maximum Resolution	Number of Cartridge	LOD	Shelf Life	Application
High resolution cartridge kit (DNA)	20-5000 bp	1-4 bp	240 runs	1 pg/μL	6 months	Multiplex PCR detection, SSR analysis
Standard cartridge kit (DNA)	20-5000 bp	4-10 bp	240 runs	1 pg/μL	6 months	NGS library quality control, cfDNA detection, conventional PCR detection
High sensitivity cartridge kit (DNA)	20-5000 bp	4-10 bp	100 runs	0.2 pg/μL	4 months (Open 3 months)	Analysis of low-concentration DNA samples, such as cfDNA
RNA cartridge kit (RNA)	20-6000 nt	/	100 runs	5 ng/μL	4 months	Total RNA quality control mRNA quality control CRISPR quality control
High sensitivity RNA cartridge kit (RNA)	20-6000 nt	/	100 runs	1 ng/μL	4 months	Low-concentration RNA analysis
Large fragment cartridge kit (DNA)	20-23000 bp	4-10 bp	240 runs	20 pg/μL	6 months	Genome, third-generation sequencing library

Parameter

Detection mode	Fluorescent
Light source	LED
Control mode	PC / Tablet
Power	110-240 V/AC, 50/60 Hz
Weight	9.2 kg
Dimension	237×290×468 mm
Channel	Single channel
System	Windows 10 and above

Number of samples/test	1-16
LOD	0.2 pg/μL (optimization conditions)
Resolution	1-4 bp
Analysis time	3-5 min/sample
Sample consumption	<0.2 μL
Fragment size CV%	≤2%
Fragment concentration CV%	≤4%

Ordering Information

Code	Product Description
AS-31050-00	GeneCE-Mini biofragment analysis system
AS-31060-00	GeneCE-MiniA biofragment analysis system, no touch screen

Code	Product Description	Model	Specification
AS-31051-01	High resolution cartridge kit (DNA)	SH1	240 runs
AS-31051-02	Standard cartridge kit (DNA)	SC2	240 runs
AS-31051-03	High sensitivity cartridge kit (DNA)	NH1	100 runs
AS-31051-04	RNA cartridge kit (RNA)	RC1	100 runs
AS-31051-05	High sensitivity RNA cartridge kit (RNA)	NRH1	100 runs
AS-31051-06	Large fragment cartridge kit (DNA)	LS1	240 runs
AS-31051-08	Protein cartridge kit (protein)	PP2	100 runs

Code	Product Description	Specification
AS-31011-97	8-strips + caps	2 strips
AS-31011-98	0.5 mL straw	2
AS-31011-99	Liquid reservoir	2
RS-SB01	Separation Buffer (DNA)	60 mL/bottle
RS-SB02	Separation Buffer (RNA)	60 mL/bottle
RS-DB01	Dilution Buffer (DNA)	15 mL/bottle
RS-DB02	Dilution Buffer (RNA)	15 mL/bottle
RS-MO01	Mineral Oil	15 mL/bottle
RS-AM0101	20-1000 bp Alignment Marker (DNA)	100 µL/kit
RS-AM0102	20-5000 bp Alignment Marker (DNA)	100 µL/kit
RS-AM0103	20-15000 bp Alignment Marker (DNA)	100 µL/kit
RS-AM0201	Low Marker (RNA)	100 µL/kit
RS-SM0101	20-1000 bp Size Marker (DNA)	100 µL/kit
RS-SM0102	20-5000 bp Size Marker (DNA)	100 µL/kit
RS-SM0103	20-15000 bp Size Marker (DNA)	100 µL/kit
RS-SM0104	23Kb Size Marker (DNA)	100 µL/kit
RS-SM0201	RNA 6000 nt Size Marker	100 µL/kit

HANGZHOU ALLSHENG INSTRUMENTS CO., LTD.

Building 9 No.7 of Zhuantang Science and Technology Economic Zone,
Xihu District, Hangzhou City, 310024 Zhejiang, P.R. China

Tel: +86-571-88859758

Fax: +86-571-87205673

✉ info@allsheng.com

🌐 www.allsheng.com

Version Date: 2025.12

