

ALLSHENG

# GeneCE-100

## Bio-Fragment Analyzers



# GeneCE-100

## Bio-Fragment Analyzers

GeneCE-100 offers nucleic acid quality control for a range of applications, including DNA QC, NGS libraries, cell-free DNA (cfDNA), PCR fragments and RNA QC.

It provides consistent high-precision analysis by using the same single-channel cartridge. And it provides flexible sample capacity from 1 to 96 samples.



## Features

### 01 Easy to Use

Equipped with a 10-inch rotatable touch screen. It can switch between horizontal and vertical screens according to analysis needs.

### 02 High Sensitivity

Reliable detection with sensitivity down to 1 pg/μL.

### 03 High Resolution

Resolution down to 1~4 bp for fragment <500 bp (2 bp for fragment <200 bp).

### 04 Reliable Standard

Provide concentration, size, 28 S / 18 S, DNA integrity indicator (DII), RNA integrity indicator (RII), DV200, etc.

### Gel Cartridges 05

Designed for analyzing at least 200 samples.

### Parallel Analysis 06

Flexible sample capacity from 1 to 96 samples.

### Intelligent Counting 07

The RFID chip embedded in the cartridge can automatically record the number of tests and expiration dates, and provide prompts.

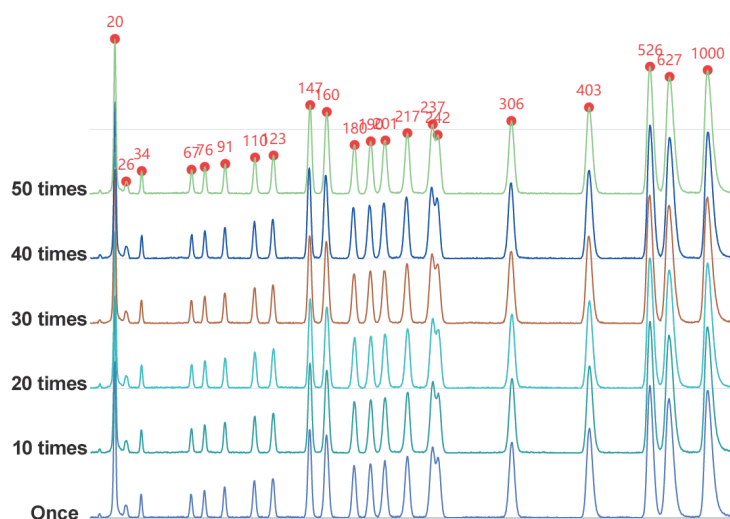
### Multiple Specification 08

NH1 high-sensitivity, SH1 high-resolution DNA analysis cartridge kits and SC2 standard cartridge kits.

# 01

## High Repeatability

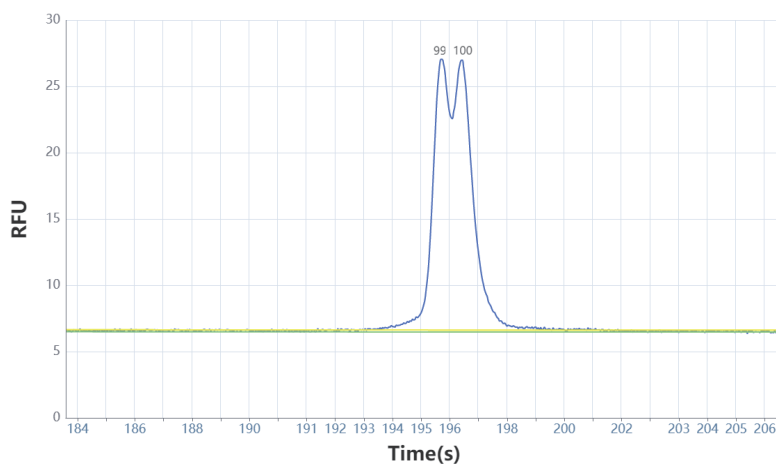
Repeat the test 50 times for Marker samples and the Marker strips can still maintain excellent fragment accuracy.



# 02

## High Resolution

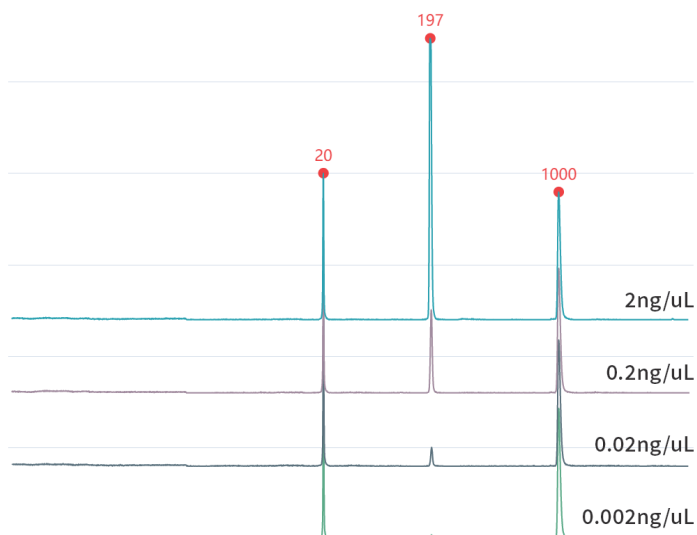
Can resolve DNA samples with differences as low as 1 bp.



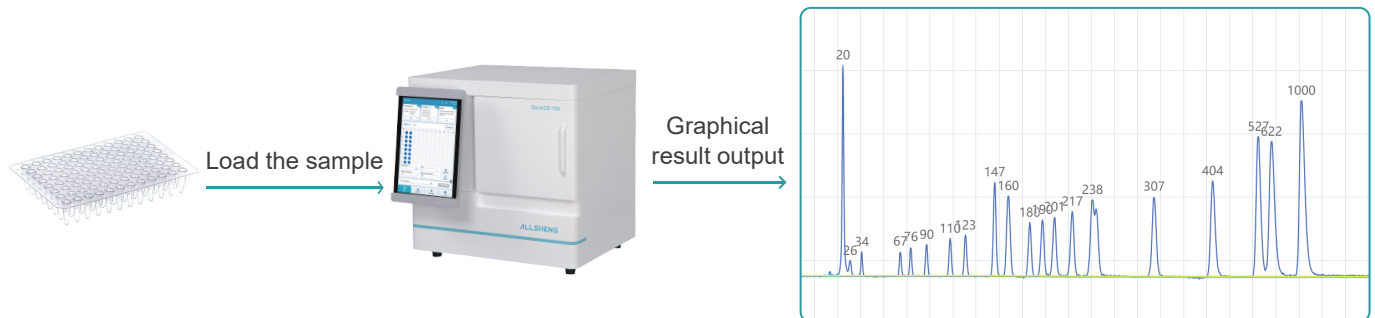
# 03

## High Sensitivity

Detection ranges from the nanogram to the picogram level are available.

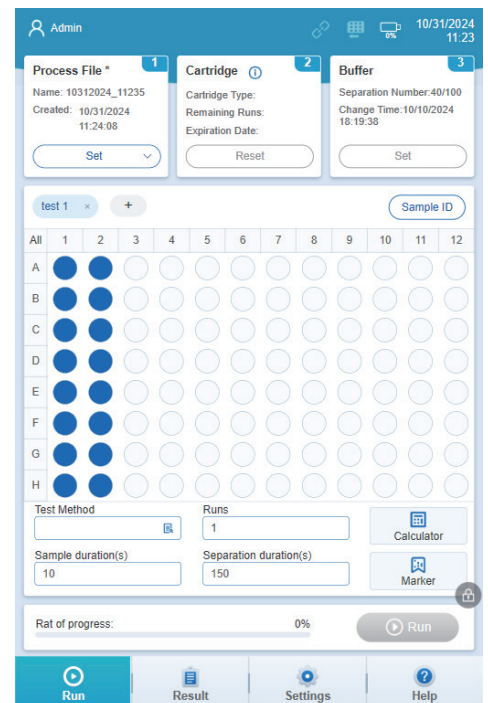
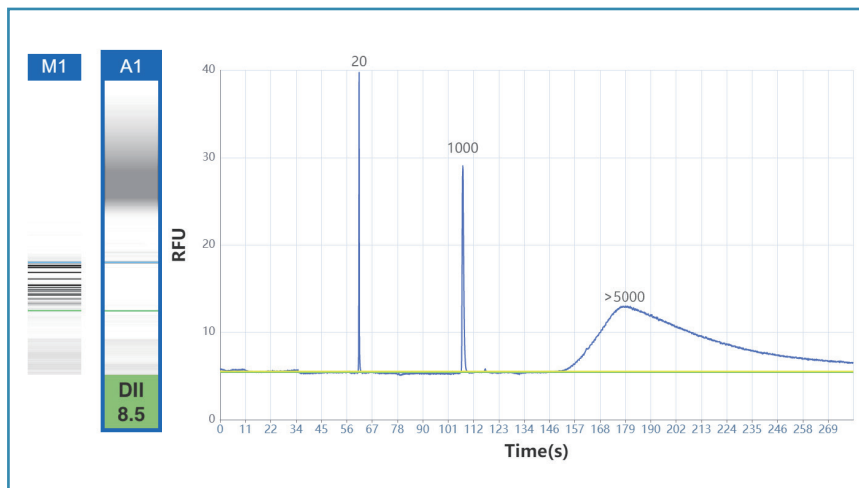


# Experimental Process



## Software Feature

Powerful independent control software allows for well layout, parameter settings and data analysis through a 10-inch high-resolution touch screen. With an intuitive and simple interface, it is easy to operate and can efficiently complete the progress of sample analysis.



- User authorization management and user independent account and password.
- Select single or superimposed views of Gel and electropherogram views.
- Unique algorithms can directly reflect the characteristics of peak values, including peak number, peak height, peak width and area.

# Analysis Cartridge Kit

The analysis cartridge kit is suitable for GeneCE-100 bio-fragment analyzers, mainly used for detecting the size and concentration of DNA fragments in gDNA, cfDNA, FFPE blocks, PCR products, broken libraries and other samples, as well as for bacterial / viral screening and identification. Compared to traditional electrophoresis, it has the advantages of high resolution, fast separation speed, low sample consumption, high detection sensitivity, and high degree of automation.



	Standard cartridge kit (SC2)	High-resolution analysis cartridge kit (SH1)	High-sensitivity analysis cartridge kit (NH1)
Separation range	20~5000 bp	20~5000 bp	20~5000 bp
Maximum resolution	5~10 bp	1~4 bp	1~4 bp
Sample size / cartridge	200 times	200 times	100 times
Detection limit	5 pg/μL	5 pg/μL	1 pg/μL
Valid period	6 months	6 months	4 months (3 months after opening)
Application range	NGS library quality control, cfDNA detection, PCR detection	Multiplex PCR detection, SSR analysis	Low concentration DNA sample analysis, such as cfDNA

## Specification

Detection method	Fluorescence	Fragment size CV%	≤2%
System light source	LED	Fragment concentration CV%	≤4%
Detector	High-sensitivity PMT	Instrument type	Single channel
Throughput	1~96	Operating system	Windows 11 and higher
Detection limit	1 pg/μL (optimized condition)	Display method	10-inch high-resolution touch screen
Resolution	1~4 bp	Power supply	110~240 V/AC, 50/60 Hz
Analysis time	3~5 min/sample	Weight	26 kg
Sample consumption	<0.2 μL	Dimension	460×445×448 mm

## Ordering Information

Code	Product description	Specification
AS-31010-00	Bio-fragment analyzers	
AS-31011-01	High-resolution (DNA) analysis cartridge kit (SH1)	200 times/pc
AS-31011-02	Standard cartridge kit (DNA) (SC2)	200 times/pc
AS-31011-03	High-sensitivity (DNA) analysis cartridge kit (NH1)	100 times/pc
AS-31011-97	8-strip PCR tube+cap	2 pcs
AS-31011-98	0.5 mL tip	2 pcs
AS-31011-99	Reservoir	2 pcs
RS-AM0101	20-1000 bp Alignment Marker (DNA)	100 µL/pc
RS-AM0102	20-5000 bp Alignment Marker (DNA)	100 µL/pc
RS-SM0101	20-1000 bp Size Marker (DNA)	100 µL/pc
RS-SM0102	20-5000 bp Size Marker (DNA)	100 µL/pc
RS-SB01	Separation Buffer (DNA)	60 mL/bottle
RS-DB01	Dilution Buffer (DNA)	15 mL/bottle
RS-MO01	Mineral Oil	15 mL/bottle

### HANGZHOU ALLSHENG INSTRUMENTS CO., LTD.

Building 9 No.7 of Zhuantang Science and Technology Economic Zone,  
Xihu District, Hangzhou City, 310024 Zhejiang, P.R. China

Tel: +86-571-88859758

Fax: +86-571-87205673

✉ info@allsheng.com

🌐 www.allsheng.com

