

# ALLSHENG



## Centrifuge Series

---

## iCEN-24(R) High Speed Centrifuge

iCEN-24(R) is a compact, safe and running quietly 24-well high-speed (refrigerated) centrifuge. Max. rotor capacity is 24×1.5/2.0 mL. Max. speed is 15,000 rpm (21,400×g). The centrifuge is suitable for 1.5, 2.0, 5.0 mL tubes and 0.2, 0.5 PCR strip tubes. With the soft-brake function, it can effectively prevent sample resuspension and protect sensitive samples, which can meet the needs of every molecular biology laboratory.

iCEN-24R is a refrigerated type, with the temperature control range of -10 °C to 40 °C. It can also maintain 4 °C at the max. speed. In static precooling mode, when the centrifuge cover is closed, the compressor automatically starts to cool.

CE



iCEN-24 High Speed Centrifuge

CE



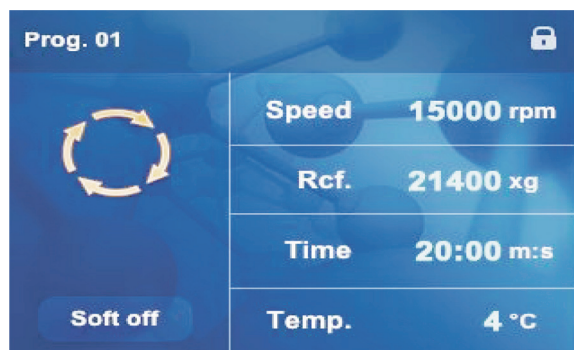
iCEN-24R High Speed Refrigerated Centrifuge

### iCEN-24 / iCEN-24R Features

- ▶ Soft-brake function to prevent resuspension and protect sensitive samples
- ▶ Max. rotor capacity: 24×1.5 mL/2.0 mL  
Max. speed: 21,400×g (15000 rpm)
- ▶ Imported motor, maintenance free
- ▶ Large color LCD screen, can display time, speed, centrifugal force at the same time
- ▶ Separate short-spin key for quick centrifugation
- ▶ Automatic lid opening at the end of run - prevents sample warming and allows easy access to samples (iCEN-24 function)
- ▶ 3 types of rotors are available, suitable for 1.5, 2.0, 5.0 mL tubes and 0.2, 0.5 PCR strip tubes
- ▶ High-strength aluminum alloy rotor, no service life limit, can be sterilized at high temperature and high pressure
- ▶ Safe and reliable, various safety protections conforming CE safety standard
- ▶ Fast lifting speed-takes only 15 s to reach the max. speed and 15 s to drop from the max. speed to 0

### iCEN-24R Unique Features

- ▶ Strong cooling capacity, can maintain 4 °C at the max. speed
- ▶ Rapid cooling speed, from RT. to 4 °C in less than 20 min
- ▶ Temperature control range: -10 °C to 40 °C
- ▶ In static precooling mode, when the centrifuge cover is closed, the compressor automatically starts to cool



iCEN-24R Main Interface

## Specification

Model	iCEN-24	iCEN-24R	
Speed (rpm)	500-15000 rpm (increment 100 rpm)	500-15000 rpm (increment 100 rpm)	
Max. centrifugation medium density	1.2 g/mL	1.2 g/mL	
Acceleration and deceleration time (soft off)	15 s	15 s	
Acceleration and deceleration time (soft on)	45 s	45 s	
Max. capacity	24×1.5 mL/2.0 mL	4×PCR strip rotor	12×5 mL (suitable for round-bottom tubes) rotor
Max. rotor radius	85 mm	68 mm	85 mm
Max. RCF	100-21400×g	100-17100×g	100-21400×g
Temp. control accuracy (@ 4 °C)	---	±2 °C	
Cooling time to 4 °C	---	≤20 min	
Temperature range	---	-10 °C to +40 °C	
Power	350 W	500 W	
Dimension (L×W×H) mm	260×410×225	300×500×320	
Weight (including rotor)	13 kg	30 kg	
Timer	1 s-99 min59 s (short-spin)	1 s-99 min59 s (short-spin)	
Power supply	AC100-120 V / AC200-240 V 50-60 Hz	AC100-120 V / AC200-240 V 50-60 Hz	

## Ordering Information

Code	Description
AS-08120-00	iCEN-24 High speed centrifuge, AC100 V-120 V/200 V-240 V, 50-60 Hz
AS-08130-00	iCEN-24R High speed refrigerated centrifuge, AC100 V-120 V/200 V-240 V, 50-60 Hz
AS-08121-01	24×1.5 mL/2.0 mL rotor
AS-08121-02	4×8×0.2 mL PCR strip rotor
AS-08121-03	12×5 mL rotor
AS-08041-01	Adapters for 0.5 mL tubes
AS-08041-02	Adapters for 0.2 mL tubes

## Mini-15K High Speed Centrifuge

The Mini-15K is a practical, compact and reliable laboratory assistant with the max. speed of 14,500 rpm. Humanized design, simple and compact appearance, low noise design of special processing create a quiet, comfortable experimental environment for you. With sensitive and efficient speed control, it only takes 15 s to accelerate to the max. speed, and only 15 s to decelerate from the max. speed to 0. In addition, easy-to-operate digital display, easy-to-use operation key, short-spin key, rpm and rcf conversion and other functions make various experimental stages at your command.



### Features

- ▶ Beautiful and simple appearance, backlit LCD display
- ▶ Capacity: 12×1.5 mL/2.0 mL tubes
- ▶ Adopt brushless maintenance-free high-speed motor, ultra-quiet operation
- ▶ Unique airflow guide to keep samples at low temperature. After 30 minutes of running at the max. speed, the temperature rise only 10 °C
- ▶ Sensitive and efficient speed control, takes only 15 s to rise to the max. speed, and 15 s to drop from the max. speed to 0
- ▶ Separate short-spin key for transiently centrifugation
- ▶ High-strength aluminum alloy rotor, no service life limit, can be sterilized at high temperature and high pressure
- ▶ Safe and reliable, various safety protections conforming CE safety standard

### Rotors and accessories

1. High strength transparent plastic cover
2. The rotor can be sterilized by high temperature and high pressure (121 °C, 20 min)
3. Optional adapter accessories
  - Adapters for 0.2 mL tubes
  - Adapters for 0.5 mL tubes



### Specification

Model	Mini-15K
Power supply	100~120 V / 200~240 V 50/60 Hz
Power	100 W
Speed (rpm)	14,500 rpm
Max. RCF	14,000×g
Timer	20 sec~99 min
Acceleration time to max. speed	17 s
Deceleration time from max. speed	15 s
Dimension (L×W×H) mm	270×230×155
Weight (including rotor)	4.8 kg

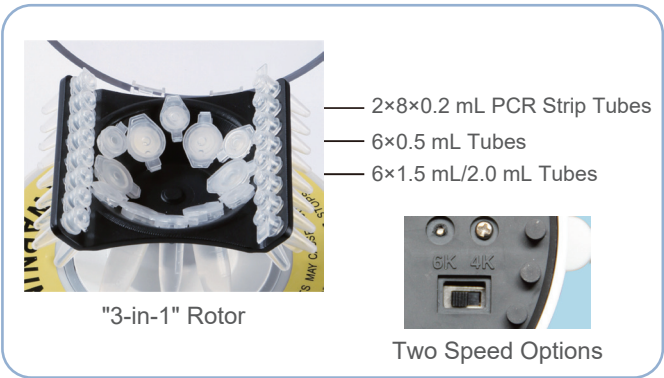
### Ordering Information

Code	Description
AS-08110-00	Mini-15K High speed centrifuge
AS-08041-01	Adapters for 0.5 mL tubes
AS-08041-02	Adapters for 0.2 mL tubes

# Mini-6KS Mini Centrifuge

## Features

- ▶ "3-in-1" rotor design, including:
  - 6×1.5 mL/2.0 mL rotor
  - 6×0.5 mL rotor
  - 2-8×0.2 mL PCR strip rotor
- ▶ Compact and streamlined design, small size
- ▶ Mute technology, ultra-low noise operation
- ▶ Using micro DC motor and carbon fiber rotor
- ▶ Unique rotor design, no need to replace the rotor, can meet different experimental requirements
- ▶ Two speed options: 4,000 & 6,000 rpm



## Ordering Information

Code	Description
AS-08030-00	Mini-6KS Mini centrifuge

Mini-6KS is a low-speed centrifuge with a composite rotor. Users can complete different experiments without changing the rotor, saving the user's time.



## Specification

Model	Mini-6KS
Max. RCF	2,000×g (6,000 rpm) 1200×g (4,000 rpm)
Rotor	"3-in-1" rotor design, no need to replace 6×1.5/2.0 mL rotor 6×0.5 mL rotor 16×0.2 mL PCR strip rotor
Speed	6,000 rpm&4,000 rpm
Power supply	AC100-240 V, 50/60 Hz

# Mini-6KC Mini Centrifuge

Mini-6KC is an improved model of Mini-6K. It has large capacity and can place 8-well 1.5 mL/2.0 mL tubes or 4 rows of 8×0.2 mL PCR strip tubes. Two speeds are interchangeable, suitable for the two rotors.

## Features

- ▶ Compact and streamlined design, small size
- ▶ Mute technology, ultra-low noise operation
- ▶ Using micro DC motor and carbon fiber rotor
- ▶ 8-well rotor and 4×8×0.2 mL large-capacity rotor design
- ▶ Quick release rotor tub, makes rotor exchange easier
- ▶ Two speed options: 4,000 & 6,000 rpm





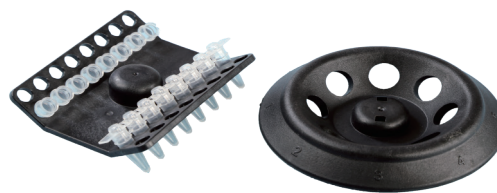
## Mini-6KC Mini Centrifuge

### Rotor

- 8×1.5 mL/2.0 mL tube rotor
- 4×8×0.2 mL PCR strip rotor

### Specification

Model	Mini-6KC
Max. RCF	2,000×g (6,000 rpm) 1,200×g (4,000 rpm)
Capacity	8×1.5 mL/2.0 mL tubes 4×8×0.2 mL PCR strip tubes 8 or 32×0.2 mL tubes 8×0.5 mL tubes
Speed	6,000 rpm & 4,000 rpm
Noise	<50 dB



Quick Release Rotor

### Ordering Information

Code	Description
AS-08020-00	Mini-6KC Mini centrifuge
AS-08021-01	8×1.5 mL/2.0 mL rotor
AS-08021-02	4×8×0.2 mL strip rotor
AS-08041-01	Adapters for 0.5 mL tubes
AS-08041-02	Adapters for 0.2 mL tubes

## Mini-6K / Mini-7K / Mini-10K Mini Centrifuge

### Features

- Compact shape, colorful, streamlined design, small size
- Mute technology, ultra-low noise operation
- Suitable for a variety of centrifuge tubes, one machine for multiple purposes
- Compliant with international safety regulations
- Safety design: flip-open switch function, the cover will automatically stop when it is opened. The outer cover is made of flame-retardant composite material, which is not easy to break
- Using micro DC motor and carbon fiber rotor



### Ordering Information

Code	Description
AS-08060-00	Mini-6K Centrifuge
AS-08070-00	Mini-7K Centrifuge
AS-08080-00	Mini-10K Centrifuge
AS-08061-01	Allen Wrench
AS-08061-02	6×1.5 mL/2.0 mL rotor
AS-08061-03	2×8×0.2 mL strip rotor
AS-08061-04	Slide rotor
AS-08041-01	Adapters for 0.5 mL tubes
AS-08041-02	Adapters for 0.2 mL tubes

### Specification

Model	Mini-6K	Mini-7K	Mini-10K
Max. RCF	2,000×g	2,300×g	5,000×g
Rotor	6×1.5 mL/2.0 mL rotor 2×8×0.2 mL strip rotor	6×1.5 mL/2.0 mL rotor 2×8×0.2 mL strip rotor	6×1.5 mL/2.0 mL rotor
Speed	6,000 rpm	7,000 rpm	10,000 rpm
Noise	<50 dB	<52 dB	<54 dB

## MPC-P25 Microplate Centrifuge

CE



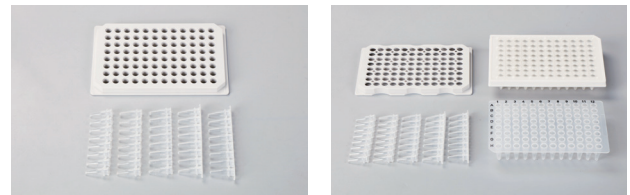
MPC-P25 microplate centrifuge adopts a unique horizontal rotor design. The microplates or centrifuge tubes are placed symmetrically on the inclined rotor frame. The rotor frame is thrown from the inclined position to the horizontal position by centrifugal force, so as to ensure rapid release of hanging wall droplets. MPC-P25 adopts a streamlined design, with small size, beautiful appearance and low running noise. It is an upgraded version of Mini-P25 microplate centrifuge produced by our company, and it is also an ideal companion for PCR experiments!

### Features

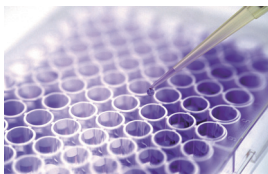
- Unique design for the horizontal rotor centrifuge
- It can accept below formats:  
96-well, 384-well PCR standard plates with skirted, non-skirted  
96-well, 384-well Elisa plates  
8x0.2 mL PCR strip tubes or 0.2 mL PCR tubes
- Short-spin and timing of two operations make the tests more convenient
- Streamlined appearance and transparent lid design
- Automatic braking function, braking time is about 30 s

### Adapter

- Adapters for skirted, half-skirted or unskirted PCR plates
- 8x0.2 mL PCR strip tubes or adapters for 0.2 mL PCR tubes



### Application



96-well, 384-well Elisa Plates



96,384 PCR Plates



8x0.2 mL PCR Strip Tubes



0.2 mL PCR Tubes

### Specification

Model	MPC-P25
Max. RCF	480×g
Capacity	2×PCR plate / Elisa Plate 24×PCR strip tube 192×0.2 mL PCR strip tube
Timer	0-10 min
Speed	2,200 rpm
Dimension (L×W×H) mm	290×360×140
Weight	3.6 kg
Power supply	AC120 V/220 V, 50~60 Hz

### Ordering Information

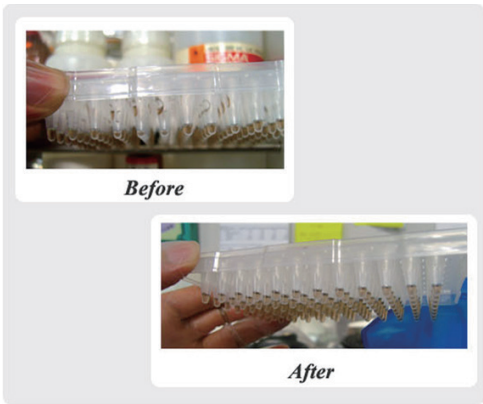
Code	Description
AS-08090-00	MPC-P25 Microplate centrifuge
AS-08091-01	Adapter for PCR plates with skirt and without skirt
AS-08091-02	Adapter for 8x0.2 mL PCR strip tubes or 0.2 mL PCR tubes

# Mini-P25 Microplate Centrifuge

Microplate centrifuge Mini-P25 is a centrifuge designed for 96-well plates, which is convenient for spinning down hanging droplets. Most microplate centrifuges on the market are bulky and take up a lot of laboratory space. The microplate centrifuge is unique in design and compact, only 23×20 cm. The microplate is installed vertically into the centrifuge rotor from the top slot of the centrifuge, and the liquid is kept at the bottom of the microplate under the action of surface tension, so there will be no leakage.



Mini-P25



Centrifugal Effect

## Features

- ▶ Quickly spin down droplets hanging wall
- ▶ Use before PCR to improve amplification
- ▶ Accepts skirted, non-skirted and all standard PCR plates

## Specification

Model	Mini-P25
Max. RCF	500×g
Capacity	2 pcs PCR plate
Max. rotational speed	2,500 rpm
Dimensions (L×W×H) mm	190×220×186
Weight	2.1 kg
Power supply	AC120 V/220 V, 50-60 Hz

## Ordering Information

Code	Description
AS-08010-00	Mini-P25 Microplate Centrifuge

## HANGZHOU ALLSHENG INSTRUMENTS CO., LTD.

Building 9 No.7 of Zhuantang Science and Technology Economic Zone,  
Xihu District, Hangzhou City, 310024 Zhejiang, P.R. China

Tel: +86-571-88859758

Fax: +86-571-87205673

✉ info@allsheng.com

🌐 www.allsheng.com

