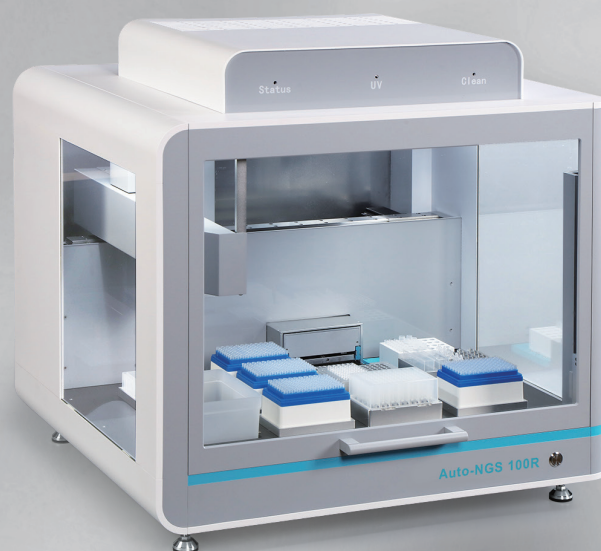


**ALLSHENG**

## **Auto-NGS 100R**

**Automated NGS Library  
Preparation Workstation**



**Automatic Efficient Accurate Open**

——Automated library preparation solution for gene sequencing process

**HANGZHOU ALLSHENG INSTRUMENTS CO., LTD.**

## Next-Generation Gene Sequencing Workflow



### Allsheng Supporting Products:

Automated nucleic acid purification system, micro-spectrophotometer, automated NGS library preparation workstation, fluorometer, fluorescence microplate reader, multi-mode microplate reader, etc

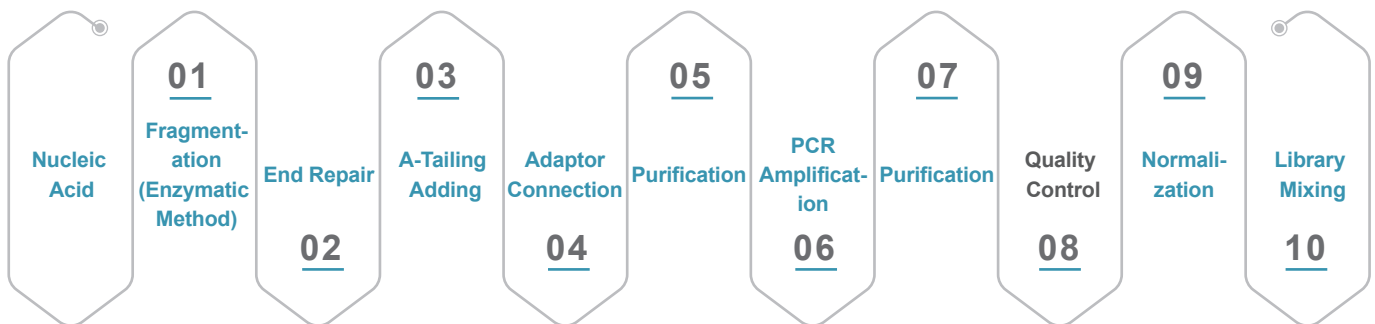


## Auto-NGS 100R

### Automated NGS Library Preparation Workstation

Auto-NGS 100R can construct 24 sample libraries in one run. Friendly software, supporting hardware and professional team ensure that you can run the actual samples in a short time, thus providing you with a good library preparation experience.

## Introduction of DNA Library Preparation Workflow



Note: Auto-NGS 100R can achieve the whole process of library preparation except for "quality control"

NGS sequencing is the mainstream gene sequencing technology, and the market will continue to expand rapidly in 2022-2026. With the continuous progress of NGS sequencing technology and the declining cost, it has gradually replaced the first generation sequencing technology to become the mainstream of the market. It can be widely used in prenatal testing, disease screening, disease diagnosis, etc. Based on this, we launched Auto-NGS 100R automated NGS library preparation workstation.

Auto-NGS 100R is based on the direct loading of nucleic acid samples to realize the full-automatic library preparation process of fragmentation, end repair, adaptor connection and PCR amplification. The single/8-channel pipettor is with

pipetting range of 1 - 200  $\mu$ L. With accurate PLLD/ CLLD and multiple liquid parameter settings, it can flexibly handle samples and reagents of different properties and volumes to meet various application scenarios. The workstation's program interface is graphical, the content of process error report is specific, and the PC program runs dynamically, so that users can quickly get familiar with the software and successfully set up the entire experimental process. At the same time, the workstation integrates heating and cooling block, magnetic plate lifting block, PCR thermal cycle block, UV sterilization lamp and efficient purification filter block, ensuring efficient library preparation and eliminating cross-contamination.



## PRODUCT FEATURES



### Precise Pipetting

The self-developed high-precision 8-channel pipettor can be used as a single channel;

A variety of liquid parameters setting ensure accurate control of liquid aspirating and dispensing process;

Capacitive and air pressure detection function can sensitively detect the liquid level, residual liquid and blockage, ensuring accurate control of the pipetting volume.



### Simple Operation, Get Started Quickly

Multi-level account management system supports the different needs of new users and advanced users;

Drag-and-drop flows simplifies program setting;

GUI is easy to understand and edit;

New users can also quickly master the operation methods of library preparation.



### Flexible Matching Experiment Needs

Equipped with several temperature control blocks to meet the special temperature requirements such as reagent and sample storage;

High efficiency magnetic block by rising and falling to avoid loss or residual of magnetic beads;

The fully automatic thermal cycling block can effectively prevent cross-contamination and meet the nucleic acid amplification process in the process of library preparation.

### Intelligent & Visual



Allow users to freely choose running part or all of the experimental processes;

Program setting error reporting and prompt functions ensure that users can quickly find programming errors;

TIP area prompts the experimental demand, current available amount and whether it is sufficient to ensure the smooth progress of the experiment;

The PC simulation operation experiment function can enable users to find problems at any time and avoid wasting samples, reagents and time.

### Multiple Functional Blocks



9 tiles (including TIP area, sample area, reagent area) + (TIP off box and waste liquid container) are designed to meet the needs of various library preparation kits;

The experimental platform can customize different blocks according to the actual needs of customers to meet various experimental solutions;

The program design feature that can be saved separately enables the same program to quickly run the experimental process only by changing the number of samples.

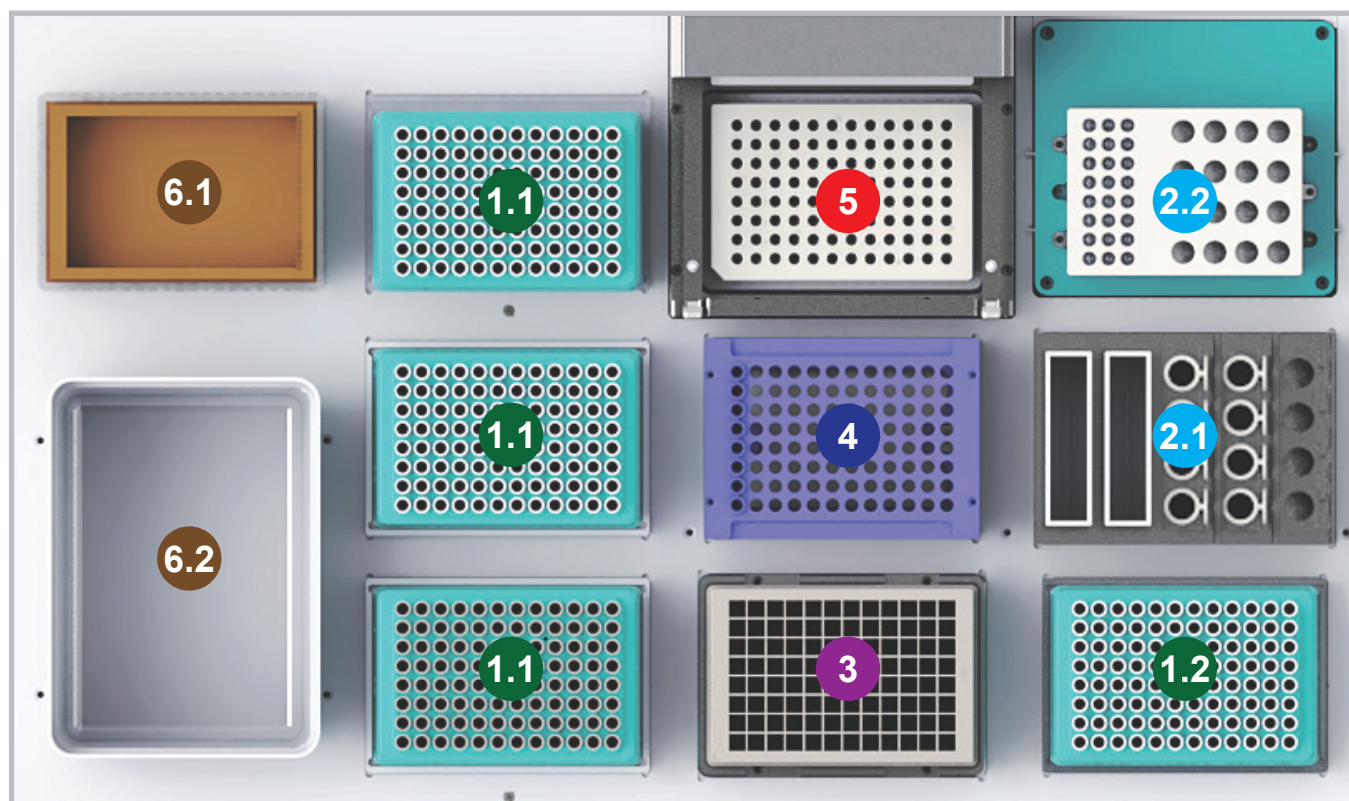
### Efficient Pollution Prevention



Equipped with efficient purification and filter system (negative pressure HEPA system) and UV sterilization to prevent cross-contamination of the experimental cabin;

The PCR block in Auto-NGS 100R can use disposable automatic cover or conventional sealing cover to avoid condensation on the top and reduce the risk of cross-infection.

## Plate Layout



### 1 TIP Area

1.1 200  $\mu$ L / 50  $\mu$ L TIP holders;

1.2 Two specifications of TIP can be combined into one plate for single channel pipetting;

Automatic loading tip mode, saving time and reducing consumption.

### 3 Magnetic Area

The bottom 96-well magnetic area can closely fit with the 2.0 mL / 1.0 mL 96-well plate, and use rising and falling function of the magnetic area to achieve the combination and separation with the magnetic beads.

### 5 Thermal Cycling Area

It is mainly used for PCR amplification step in the process of library preparation, and can be placed PCR consumables such as 96 $\times$ 0.1 mL full-skirted tubes.

### 2 Reagent Area

2.1 Normal temperature area: 2 $\times$ 60 mL storage tank + 12 $\times$ 2.0 mL / 1.5 mL centrifuge tube;

2.2 Temperature control area: 3 $\times$ 8 $\times$ 0.2 mL PCR tube + 20 $\times$ 2.0 mL centrifuge tube; temperature control range: 4~105  $^{\circ}$ C.

### 4 Sample Area

Equipped with a normal sample rack, which can place 8-strip PCR tubes; the corresponding sample rack can also be selected according to the type of sample tube.

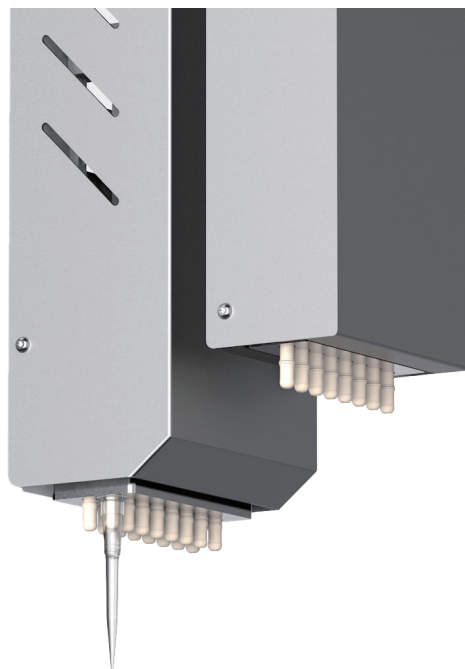
### 6 Waste Area

6.1 300 mL waste liquid container;

6.2 TIP off box;

Both the waste liquid container and TIP off box are freely accessible.

## Special Function Block



### Single-channel / 8-channel Pipettor

- 8-channel 1-200  $\mu\text{L}$  fixed spacing pipettor can be used as a single channel to meet the needs of reagent dispensing and pipetting of multiple samples in the same process.
- PLLD / CLLD function, which can sensitively detect liquid level, residual liquid volume and blockage to ensure precise control of pipetting process; equipped with the software related reminder function to ensure that there will be no abnormal experimental results due to insufficient liquid volume during the library preparation.

Pipetting range	Pipetting precision	Pipetting accuracy
1 - 200 $\mu\text{L}$	1 $\mu\text{L}$ : $\leq 5\%$	1 $\mu\text{L}$ : $\pm 8\%$
	20 $\mu\text{L}$ : $\leq 2\%$	20 $\mu\text{L}$ : $\pm 2\%$
	100 $\mu\text{L}$ : $\leq 1\%$	100 $\mu\text{L}$ : $\pm 1\%$
	200 $\mu\text{L}$ : $\leq 1\%$	200 $\mu\text{L}$ : $\pm 1\%$

### Temperature Control Block

Can be freely set at 4-105  $^{\circ}\text{C}$ , the reagent temperature control block of Auto-NGS 100R: can place 3 $\times$ 8 $\times$ 0.2 mL PCR tube + 20 $\times$ 2.0 mL centrifuge tube; various requirements can be realized by changing the block adapter according to the purpose of the block.

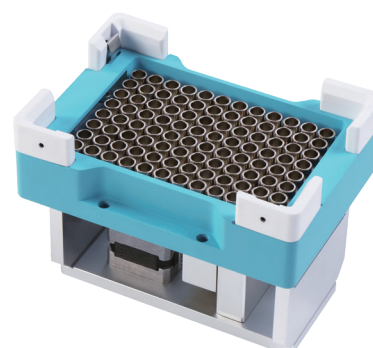
**Temperature accuracy:**  $\leq 1\text{ }^{\circ}\text{C}$

**Temperature uniformity:**  $\leq 1\text{ }^{\circ}\text{C}$ , @55  $^{\circ}\text{C}$



### Magnetic Plate Block

The magnetic plate block with freely adjustable height can be used for magnetic bead separation of various plates by cooperation with software.

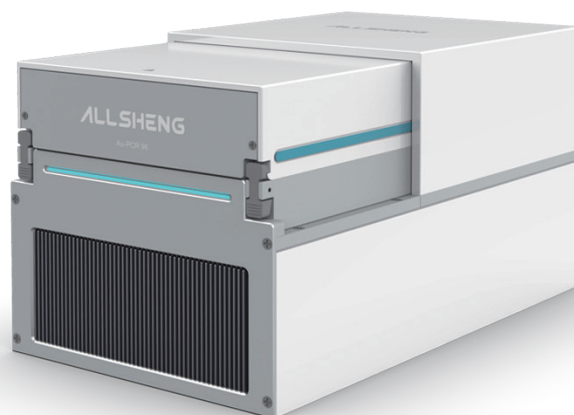


## Thermal Cycling Block

Auto-NGS 100R is equipped with a built-in thermal cycling block, which can cooperate with the software to automatically realize amplification into the library preparation process.

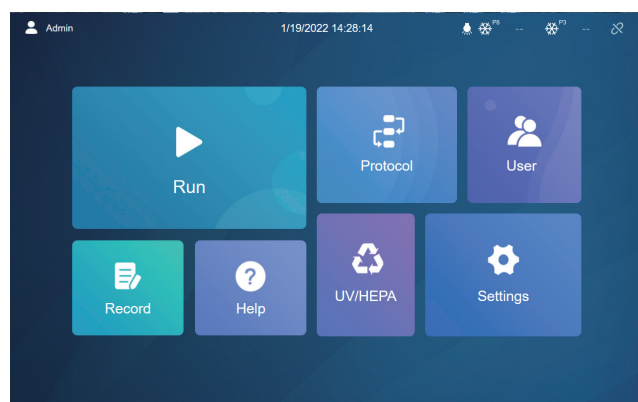
In order to prevent cross-contamination from affecting the experimental results, you can choose to use a reusable cover plate or a disposable PCR sealing film to seal the PCR plate during the experiment.

Block temperature control range	4 °C~99 °C
Temperature range of the thermo lid	30 °C~120 °C
Average heating rate	2.0 °C/s
Average cooling rate	2.2 °C/s
Temperature precision	≤0.2 °C @55°C
Temperature accuracy	≤ ±0.3 °C @55°C
Temperature uniformity	≤0.7 °C (@55 °C, 72 °C)



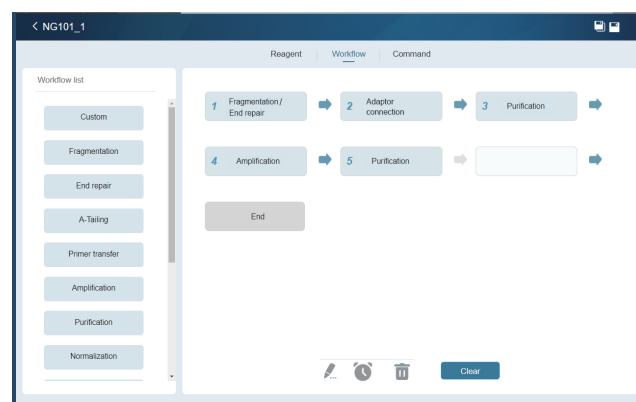
## Software

In order to facilitate the use of Auto-NGS 100R, our R&D team can customize the design according to the needs of customers for common NGS library preparation methods. Simple and intuitive GUI ensures that you can quickly run the library preparation program after the system is installed and makes the software convenient to help you create and run the automated liquid handling protocols.



### Main Page

The main page has a simple layout, which is convenient, reasonable and easy to be understood.



### Program Interface

The program settings are open and flexible. Different processes such as reagent transfer, sample transfer and PCR can be set up according to different kits to meet the needs of different experimental steps.

## Specification

### Instrument Specification

Model	Auto-NGS 100R			
Throughput	1-24			
Tiles number	9 standard tiles + (TIP off box + waste liquid area)			
Available well plate	SBS standard 24/96/384 deep and shallow well plates			
Consumable	Matching Allsheng TIP			
Magnetic plate	96-well annular magnetic plate			
UV sterilization	Equipped with UV sterilization lamp, high-efficiency purification filter device			
Instrument port	USB port, CAN communication			
Ambient condition	Temperature requirement: 20±5 °C, humidity: ≤80 %			
Power input	100~240 V, 50~60 Hz, power 1200 W			
Dimension (W×D×H)	800×730×775 mm			
Pipettor	Pipettor type	8-channel fixed spacing pipettors, can be used as a single channel		
	Pipetting principle	Air displacement pipetting technology		
	Pipetting range	1-200 µL		
	Precision(CV)	1 µL: ≤5 %	20 µL: ≤2 %	100 µL: ≤1 % 200 µL: ≤1 %
	Accuracy	1 µL: ±8 %	20 µL: ±2 %	100 µL: ±1 % 200 µL: ±1 %
Temperature control block		The reagent area is equipped with a temperature control block; temperature control range: 4~105 °C, temperature accuracy: ≤1 °C, temperature uniformity: ≤1 °C @ 55 °C		

### Thermal Cycling Block Specification

Applicable consumables	96 PCR plate	Temperature uniformity	≤0.7 °C
Application scenarios	For independent PCR experiment or liquid handling workstation	Temperature duration accuracy	±5%
Temperature control range	Thermo lid: 30 °C~120 °C	Power supply	AC100-240 V 50-60 HZ Max. 800 W
	Block: 4 °C~99 °C	Thermo lid cleaning	The thermo lid can be flipped for easy cleaning and disinfection
Default use temperature of thermo lid	120 °C	4 °C heat preservation	Unlimited
Average heating rate	Block 50 °C~90 °C: ≥2.0 °C/s	Communication port	CAN
Average cooling rate	Block 90 °C~50 °C: ≥2.2 °C/s	Control software	When connecting to the workstation, it can be controlled by workstation; When used alone, it can be controlled by APP
Temperature accuracy	≤±0.3 °C	Dimension	162×280×160 mm
Block temperature control accuracy	≤±0.2 °C	Weight	<10 kg



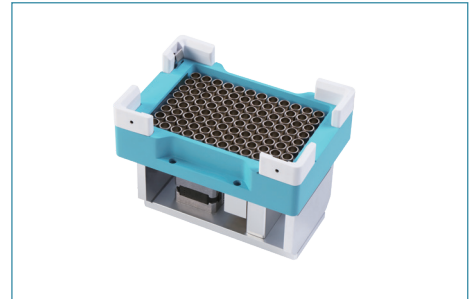
## Accessories Selection Guide

- **Au-Magnet 100 Magnetic Plate for Workstation (96 Deepwell Plate)**  
**Au-Magnet 200 Magnetic Plate for Workstation (96 PCR Plate)**

Code: AS-27021-06 Au-Magnet 100

Code: AS-27021-07 Au-Magnet 200

Function introduction: this system usually uses magnetic bead adsorption based on 96 deepwell plate



- **Au-Cooler Dry Bath Incubator for Workstation (Heating and Cooling)**

Code: AS-27021-08

Function introduction: adapt to the needs of high temperature and low temperature incubation during the preparation process

Performance parameters: temperature range: 4~105 °C, temperature accuracy:  $\leq 1$  °C, temperature uniformity:  $\leq 1$  °C, @55 °C

Optional blocks: can be customized according to requirements



- **TIP Off Box**

Code: AS-27021-01

Function introduction: used to place consumables consumed during the experiment. Need to put on a plastic bag before use

Dimension (W×D×H) mm: 129×180×140



- **Standard Tray**

Code: AS-27021-02

Function introduction: standard height plate for consumables

Adapted consumables: place SBS consumables, including tips, deepwell plate and PCR plate



- **Heightened Tray**

Code: AS-27021-03

Function introduction: higher than the standard height plate. The slightly higher design can avoid the interference caused when the 8-channel pipettor is used as a single channel.

Adapted consumables: place SBS consumables, including tips, deep-well plate and PCR plate



- **PCR Tube Holder**

Code: AS-27021-04

Function introduction: 8-strip tube adapter

Adapted consumables: 8-strip PCR tube and non-skirted 96-well PCR plate



- **Reagent Rack**

Code: AS-27021-05

Function introduction: store reagents at room temperature

Adapted consumables: place 2×60 mL storage tank and 12×2.0 mL / 1.5 mL tubes



- **200 µL SBS Tips**

Code: AS-TTF-200-NS-LB / AS-TTF-200-NSL-LB

Remark: maximum pipetting volume 200 µL



- **60 mL Reagent Tank**

Code: AS-RT-60-N

Remark: transparent and sterile



# Ordering Information

## Instrument Ordering Information

Code	Description
AS-27030-00	Auto-NGS 100R automated NGS library preparation workstation, 100-240 V AC, 1200 W
AS-27021-01	TIP off box (recommended to store less than 700 pcs)
AS-27021-02	Standard tray (standard height plate for SBS consumables, such as ALLSHENG boxed TIPs)
AS-27021-03	Heightened tray (higher than the standard tray for SBS consumables, such as ALLSHENG boxed TIPs)
AS-27021-04	PCR tube holder (8-strip PCR tube, non-skirted 96-well PCR plate)
AS-27021-05	Reagent rack (place 2×60 mL storage tank and 12×2.0 mL / 1.5 mL tubes)
AS-27021-06	Au-Magnet 100 magnetic plate for workstation (96 deepwell plate), 24 V DC, 10 W, with CAN
AS-27021-07	Au-Magnet 200 magnetic plate for workstation (96 PCR plate), 24 V DC, 10 W, with CAN
AS-23010-00	Au-Cooler dry bath incubator for workstation (heating and cooling type), 24 V DC, 160 W, with CAN

## Consumables

Code	Description	Remarks
AS-22012-201	1.6 mL 96-well U deepwell plate	--
AS-22012-202	2.0 mL 96-well U deepwell plate	--
AS-22012-203	96 V bottom reservoir	--
AS-RT-60-N	Disposable 60 mL reagent tank, PP material, transparent and sterile	20 pcs/bag, 10 bags/carton

## TIP Consumables

Code	Volume	Description	Packing
AS-TT-50-N-LB	50 µL	Allsheng tip, transparent, boxed	96 pcs/box 24 boxes/carton
AS-TT-50-NL-LB	50 µL	Allsheng tip, transparent, boxed, low adsorption	
AS-TT-50-NS-LB	50 µL	Allsheng tip, transparent, boxed, sterile	
AS-TT-50-NSL-LB	50 µL	Allsheng tip, transparent, boxed, sterile, low adsorption	
AS-TTF-50-NS-LB	50 µL	Allsheng tip, transparent, boxed, sterile, filter element	
AS-TTF-50-NSL-LB	50 µL	Allsheng tip, transparent, boxed, sterile, filter element, low adsorption	
AS-TT-200-N-LB	200 µL	Allsheng tip, transparent, boxed	
AS-TT-200-NL-LB	200 µL	Allsheng tip, transparent, boxed, low adsorption	
AS-TT-200-NS-LB	200 µL	Allsheng tip, transparent, boxed, sterile	
AS-TT-200-NSL-LB	200 µL	Allsheng tip, transparent, boxed, sterile, low adsorption	
AS-TTF-200-NS-LB	200 µL	Allsheng tip, transparent, boxed, sterile, filter element	
AS-TTF-200-NSL-LB	200 µL	Allsheng tip, transparent, boxed, sterile, filter element, low adsorption	

## **HANGZHOU ALLSHENG INSTRUMENTS CO., LTD.**

Building 9 No.7 of Zhuantang Science and Technology Economic Zone,  
Xihu District, Hangzhou City, 310024 Zhejiang, P.R. China

Tel: +86-571-88859758

Fax: +86-571-87205673

✉ [info@allsheng.com](mailto:info@allsheng.com)

🌐 [www.allsheng.com](http://www.allsheng.com)

